



# Assessing Coastal Resilience IN THE UNITED STATES

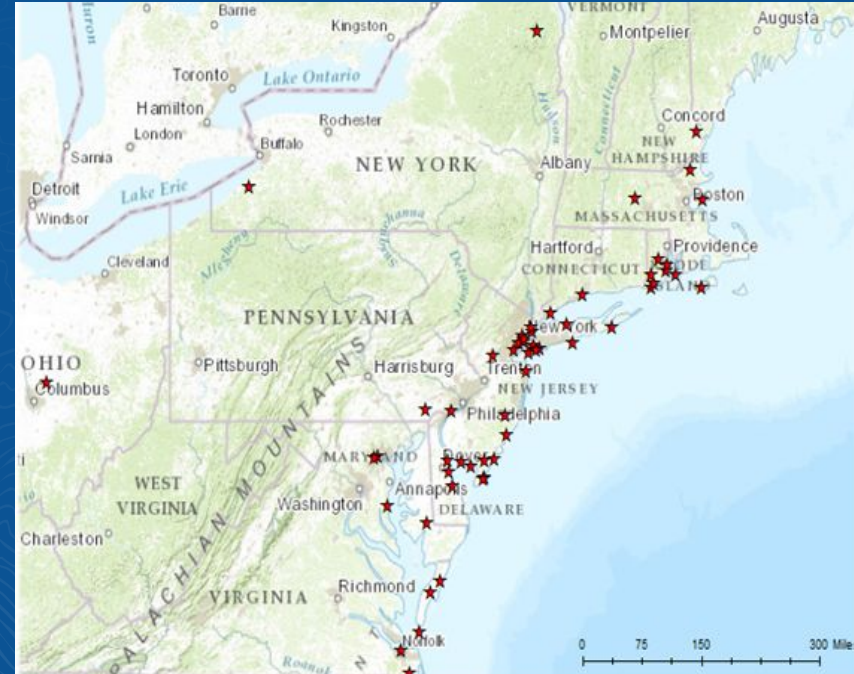
Greg Dobson, Ian Johnson, Kim Rhodes  
UNC Asheville's NEMAC

Mandy Chesnutt  
National Fish and Wildlife Foundation



# Background Information

- August 2013: DOI selected NFWF to administer its Hurricane Sandy Coastal Resilience Program
- Projects that reduce communities' vulnerability to coastal storms and related threats by strengthening natural lands that also benefit fish and wildlife
- With funding from DOI and NFWF, over \$100 million was awarded to 54 projects



# Project Objectives

- Identify areas on the landscape where implementation of conservation actions will have maximum benefit for human community resilience AND fish and wildlife habitat
- Account for coastal and inland storm events
- Regional assessments create a contiguous and standardized dataset for US coastlines
- Targeted watershed assessments identify projects that build community and ecological resilience at local levels

# Project Regions



# Community Exposure Index

# Threat Index

What are the  
flood-related hazards  
on the landscape?

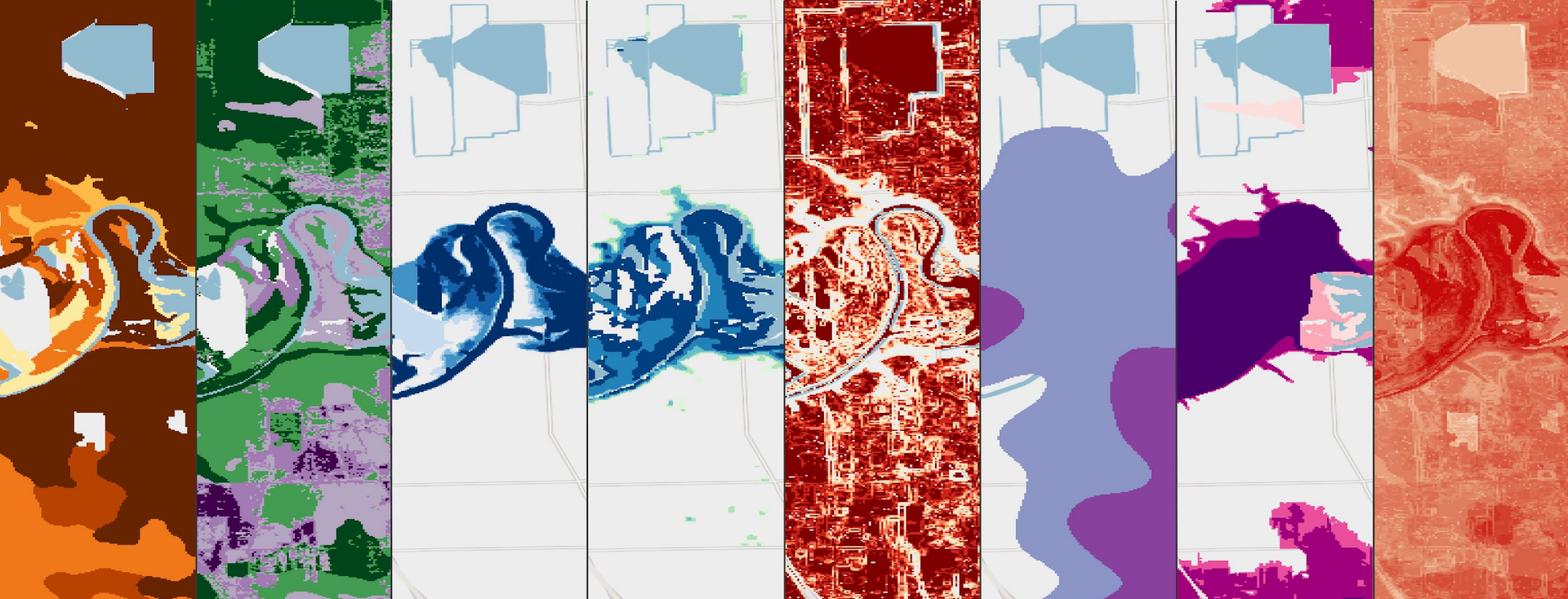
X

# Community Asset Index

What assets are  
exposed to harm?

=

# Community Exposure Index



Soil Erodibility

Impermeable Soils

Sea Level Rise

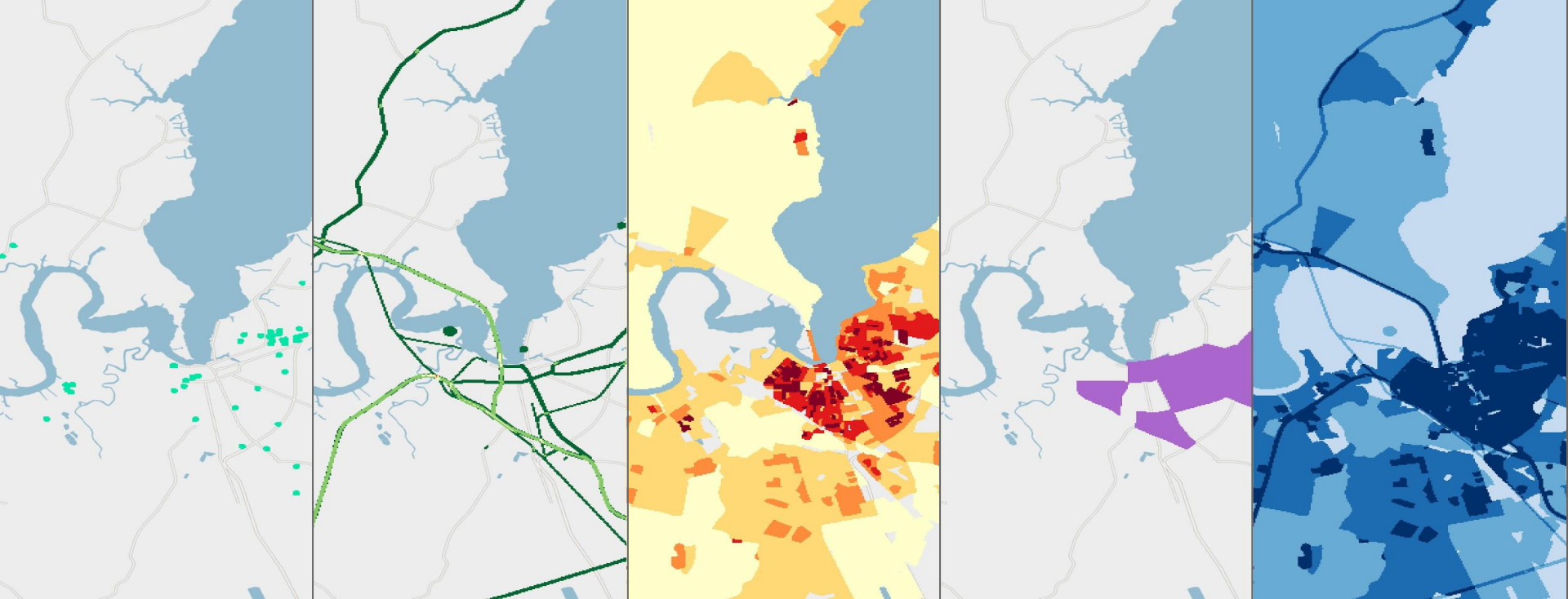
Storm Surge

Areas of Low Slope

Geological Stressors

Flood-prone Areas

Combined Threat Index



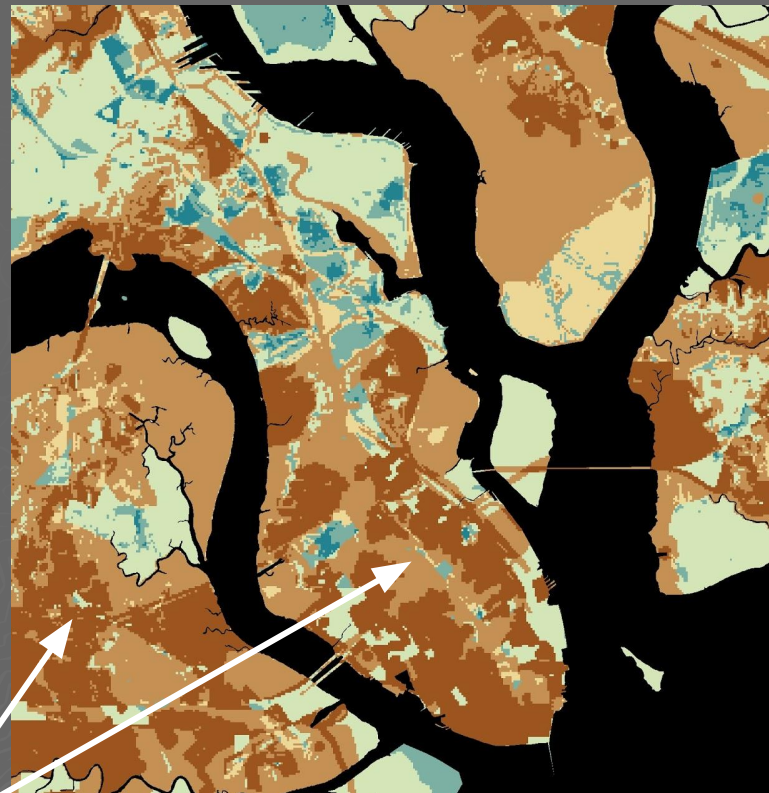
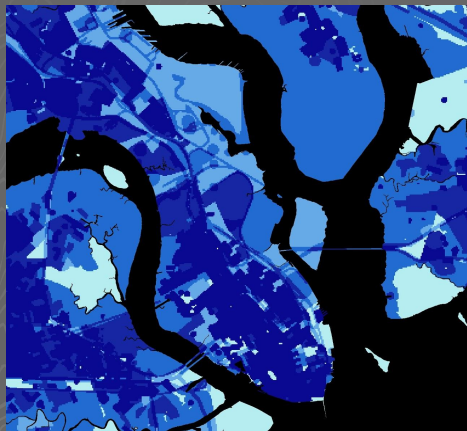
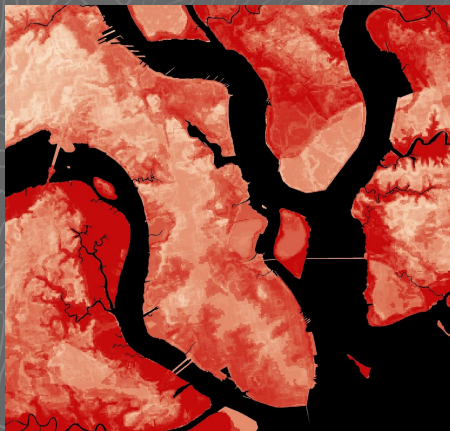
Critical Facilities

Critical Infrastructure

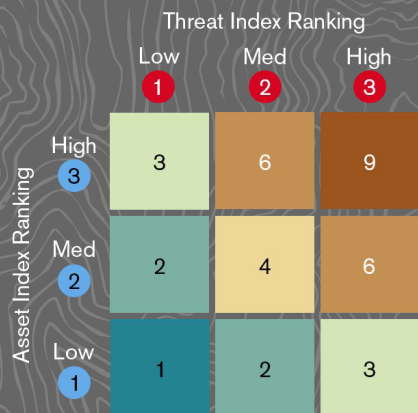
Population Density

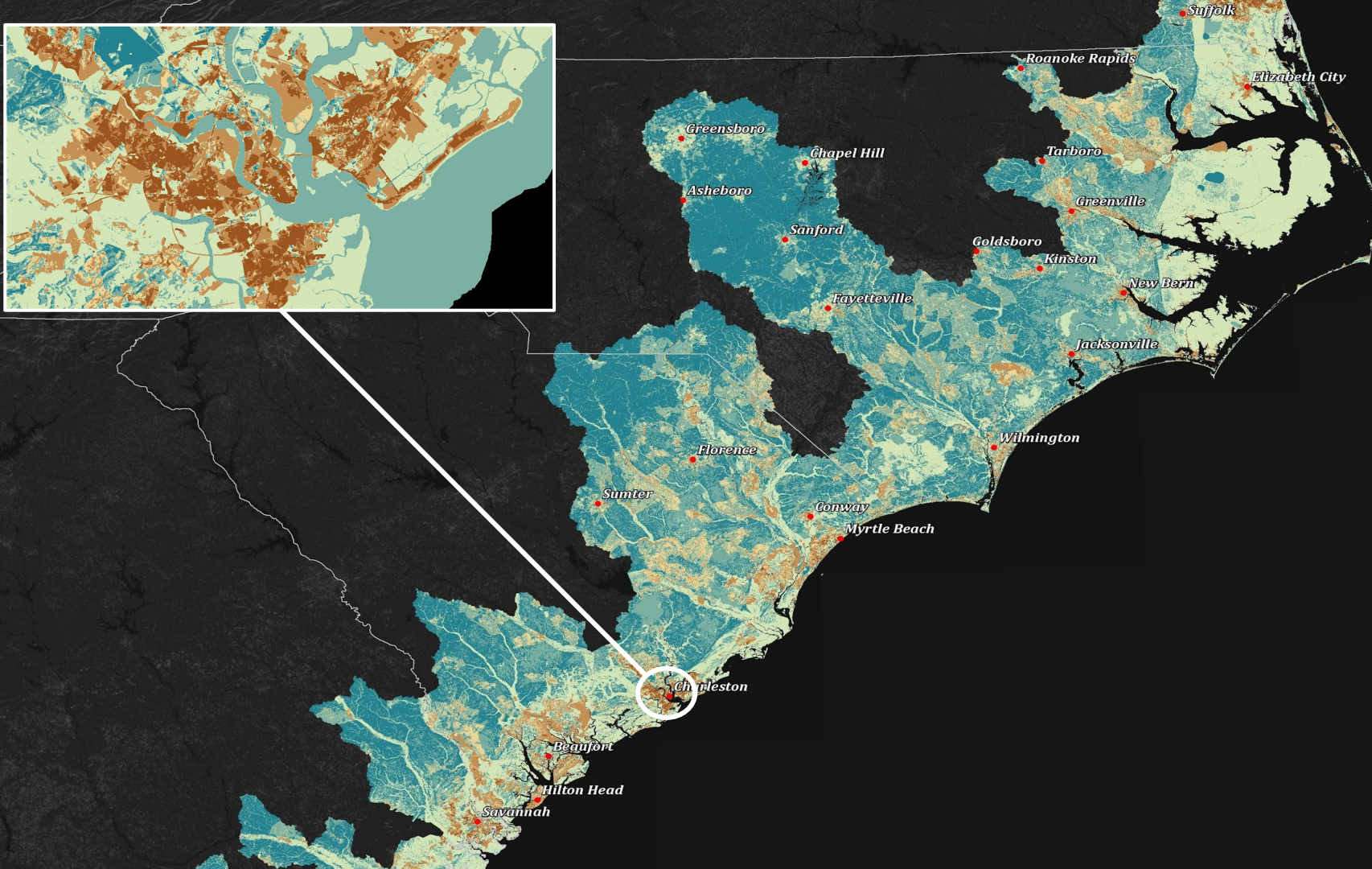
Social Vulnerability

Combined Community Asset Index



Helps communicate  
where the most  
people and assets  
are exposed







# Regional Fish and Wildlife Index



### Terrestrial Index:

- NatureServe (HUC-10) priority species
- Audubon Important Bird Areas

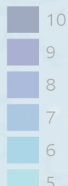
### Aquatic Index:

- NatureServe (HUC-10) priority species
- NOAA Critical Habitat
- NOAA Essential Fish Areas
- NOAA Habitat Areas of Particular Concern

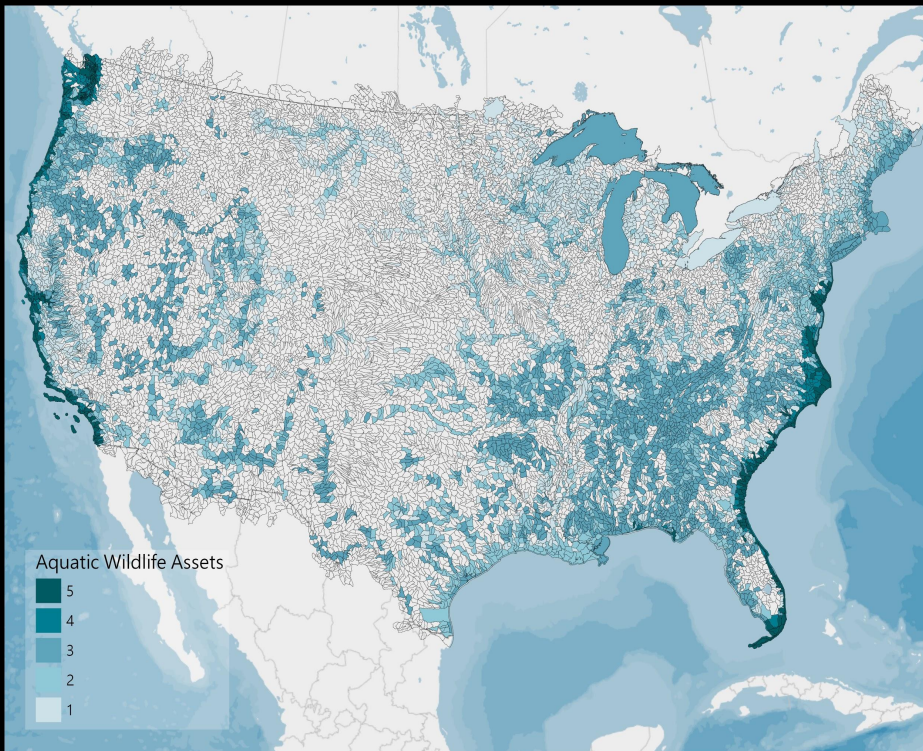
### Combined Fish and Wildlife Index:

Identifies areas on the landscape where there is a high concentration of both priority Terrestrial and Aquatic species and their habitats.

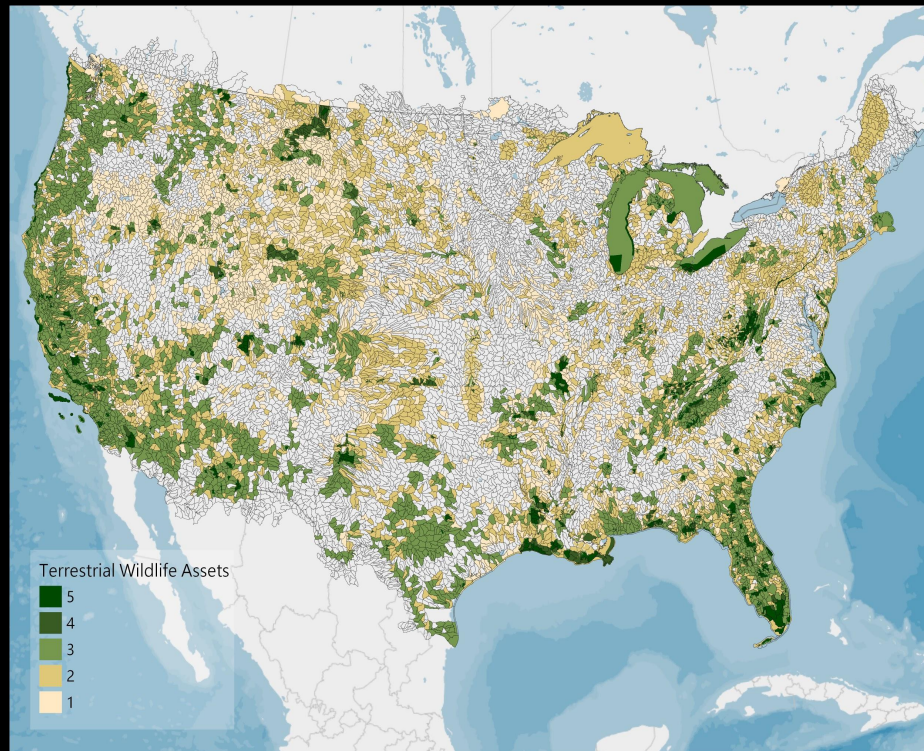
Combined Fish and Wildlife

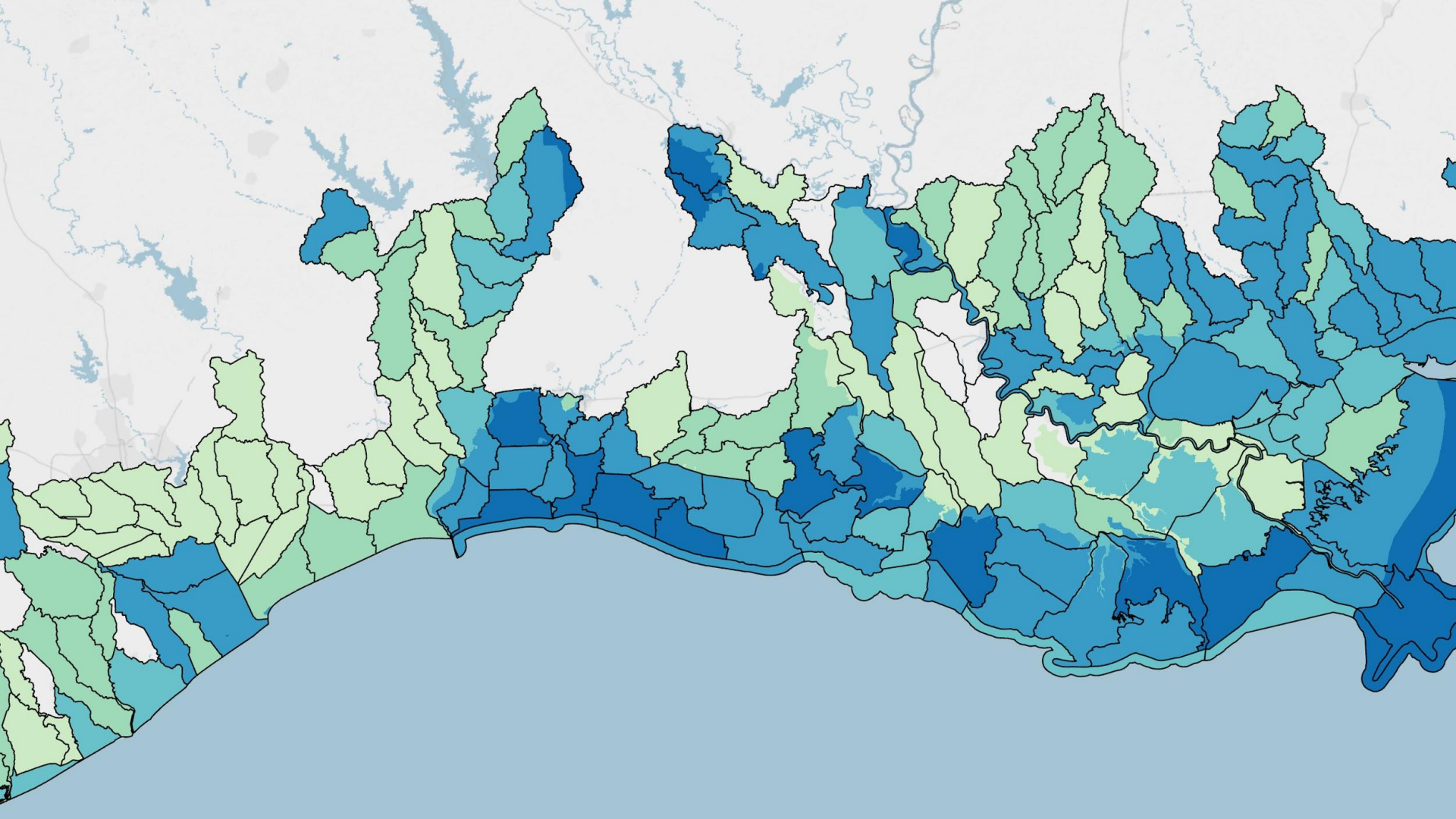


# Aquatic Index



# Terrestrial Index





# Hubs



How to identify and prioritize landscapes that can build resilience for both community assets and fish & wildlife?

- Large, contiguous tracts of open land
- Provide communities protection and buffering from storms
- Ideal for restoration, enhancement, and expansion projects
- Look at these places through the lens of community exposure and critical fish & wildlife habitat



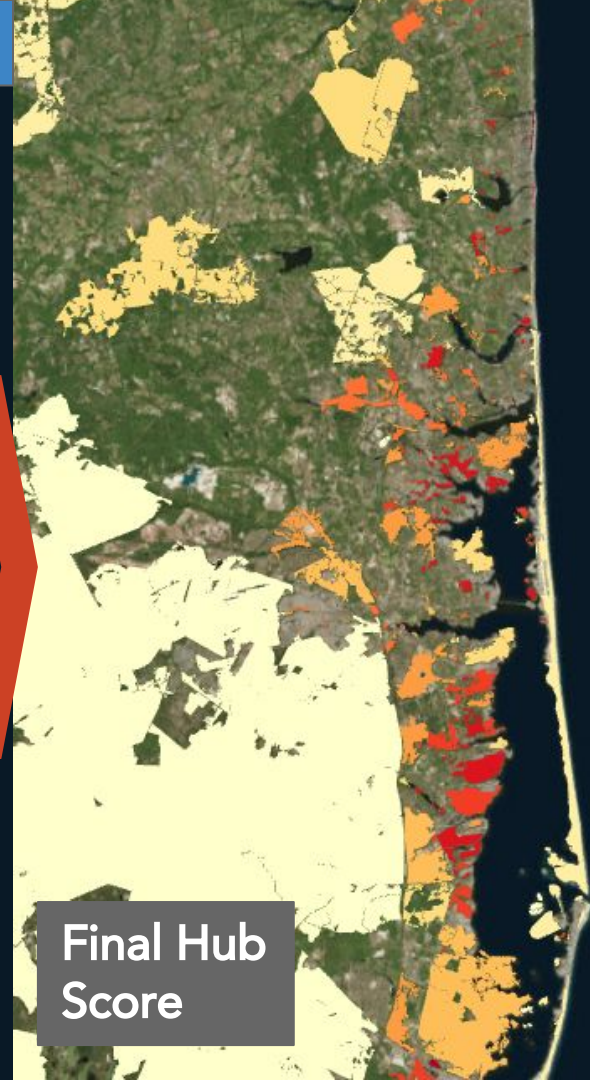
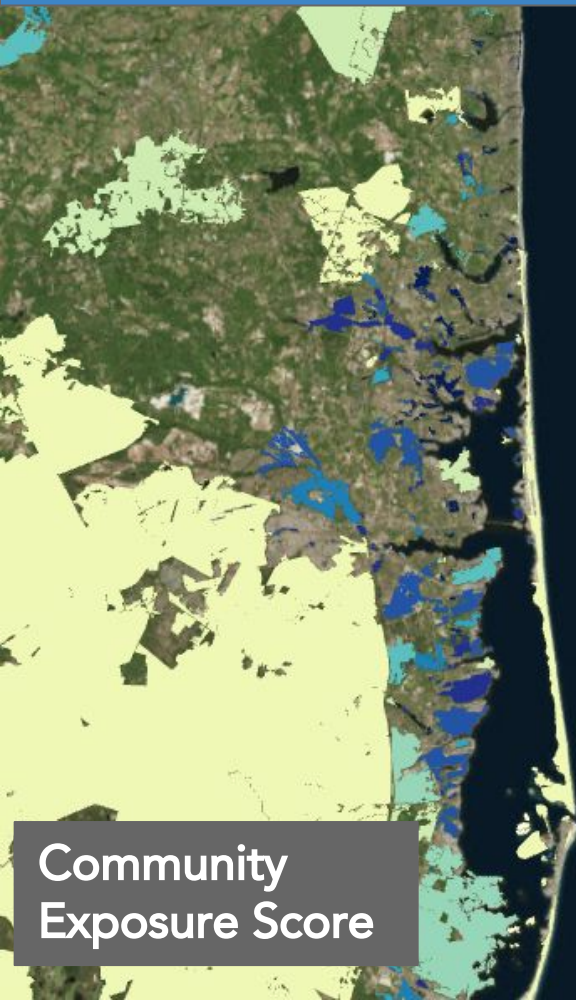
The image consists of three vertical panels showing a map of land cover and protected areas. The left panel shows protected areas in orange. The middle panel shows open, natural land cover in green. The right panel shows the combined areas in yellow. A red arrow points from the middle panel to the right panel. The background is a grayscale aerial photograph of a coastal area with water bodies and land.

Protected Areas  
*USGS PAD-US*

Open, natural  
land cover near  
densities of  
exposed assets  
*NLCD, 2011*

Combined

Combined Hubs → Zonal Statistics with the Indices





**Hubs!**  
Landscapes that can be used to help  
communities respond to and recover  
from flood-related events  
AND  
Provide benefit to natural habitat

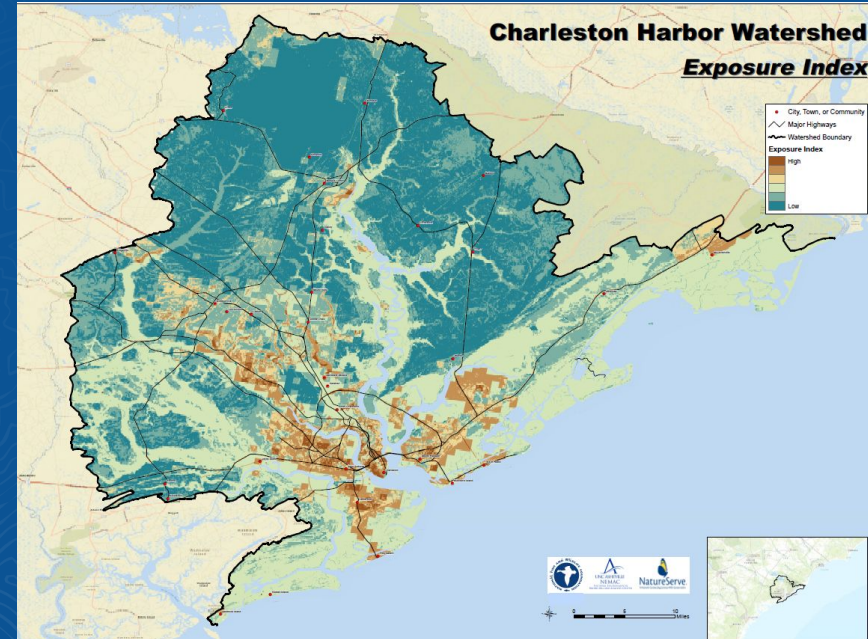
# Targeted Watersheds

# Targeted Watersheds



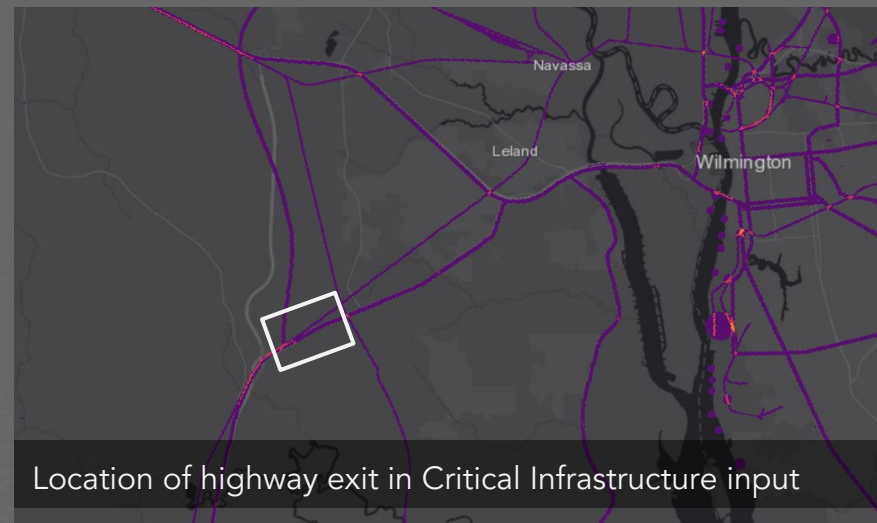
# Targeted Watershed Assessments

- Deeper dive into select watersheds
- Engage with local stakeholders to:
  - Identify alternative or better, more local-scale data
  - Provide awareness of the Assessment
  - Discuss potential project opportunities and project sites
- The process:
  - Introductory webinar
  - 1-day workshop
  - Follow-up webinars with draft results
  - 1/2-day workshop with final results



CASE STUDY:

Hurricane Florence  
*Wilmington, NC*



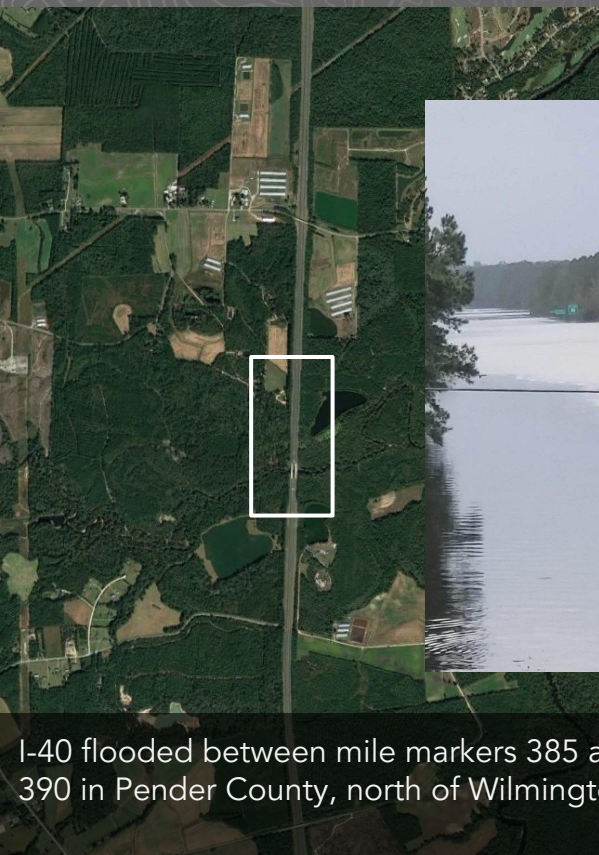
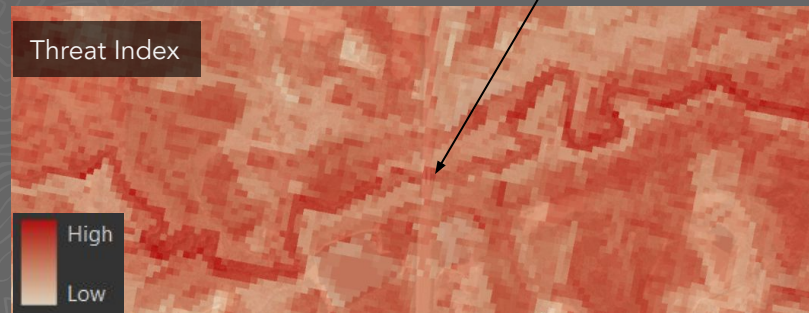
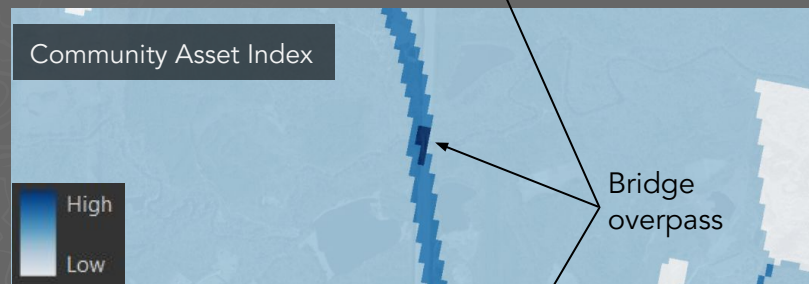
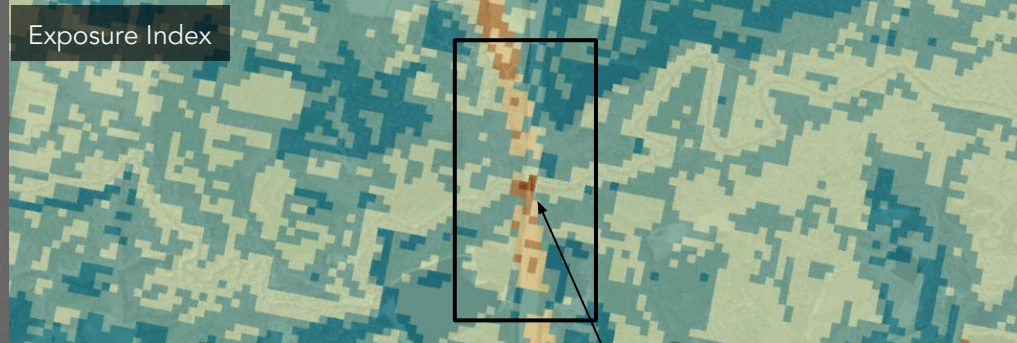
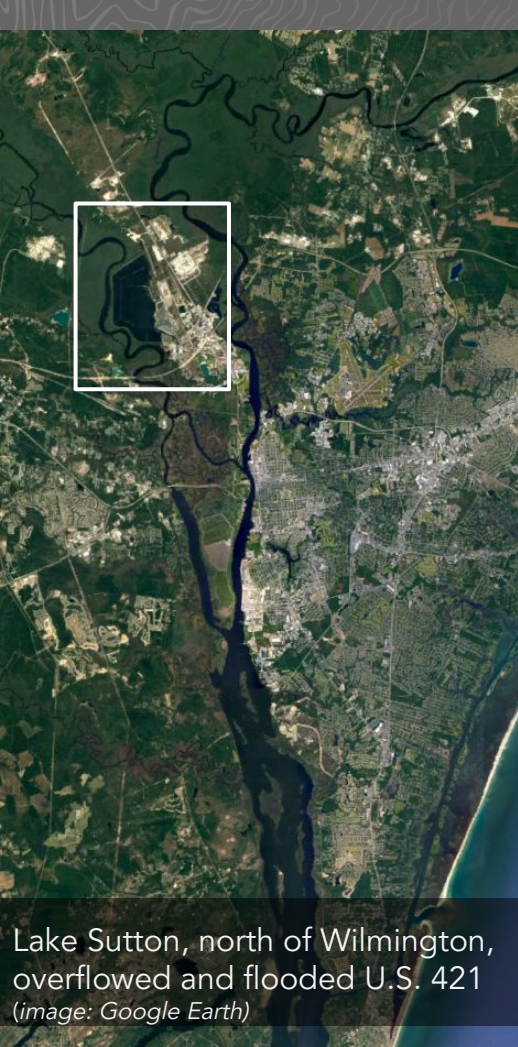


Image: NCDOT

Exposure  
High  
Low



I-40 flooded between mile markers 385 and 390 in Pender County, north of Wilmington.



Part of U.S. 421 washed away just south of the Pender-New Hanover County line near Wilmington, Sept. 21. *(image: Matt Born, Star News)*



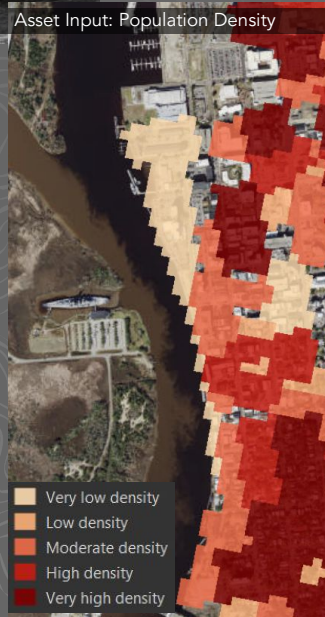
Lake Sutton, north of Wilmington, overflowed and flooded U.S. 421 *(image: Google Earth)*



Floodwaters begin to recede on Water Street in Wilmington. (image: Ricky Carioti, Washington Post)



Water St. is a part of Wilmington that is highly exposed



CASE STUDY:

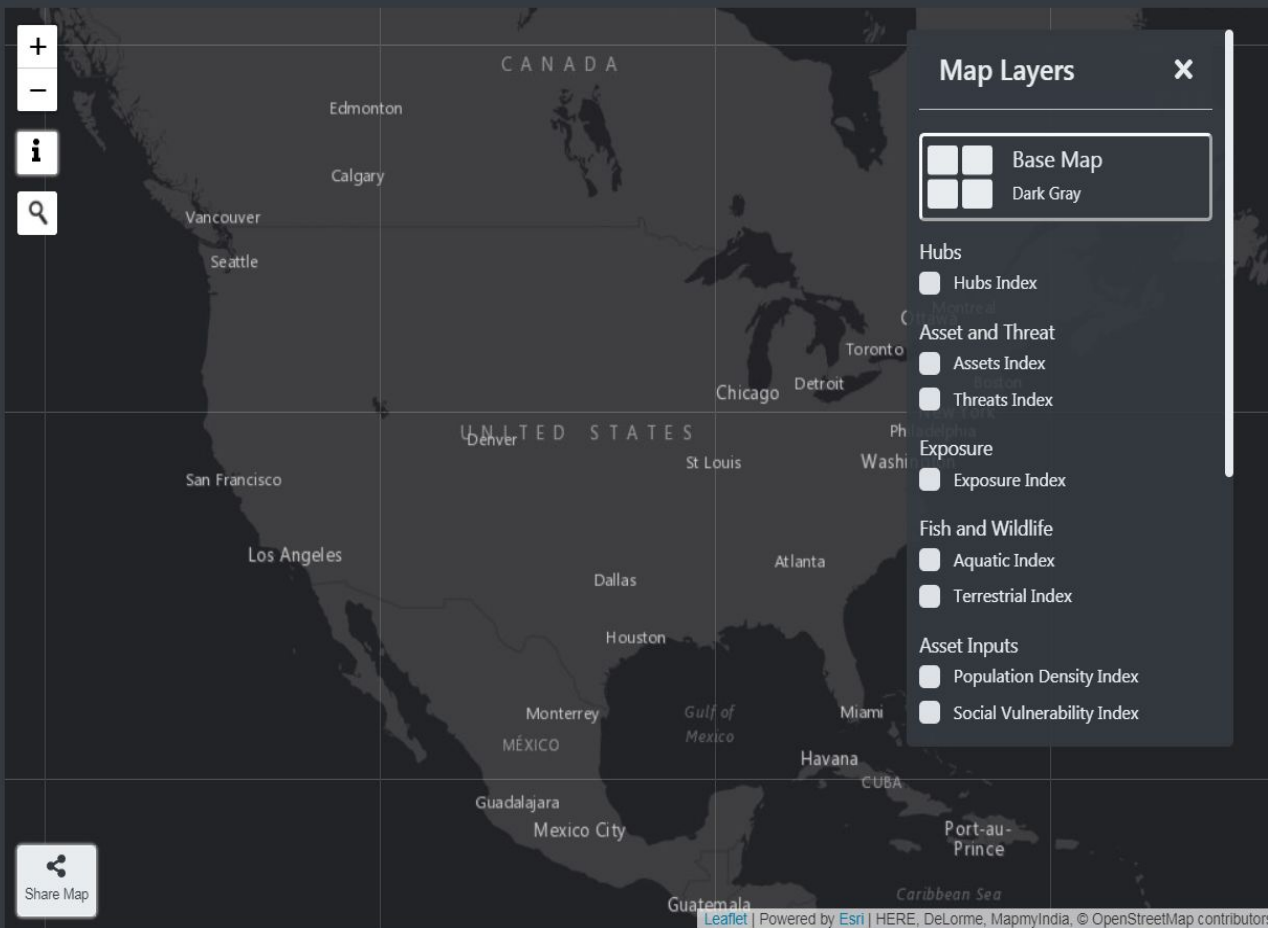
Hurricane Florence

*Conway, SC*





# Web Tool


# NFWF Coastal Resilience Assessment


[Home](#)[Download Data](#)[About](#)

## Start Exploring

 Clear Areas  
on map

 Draw Area  
on map

 Upload  
Shapefile

 Update  
Statistics

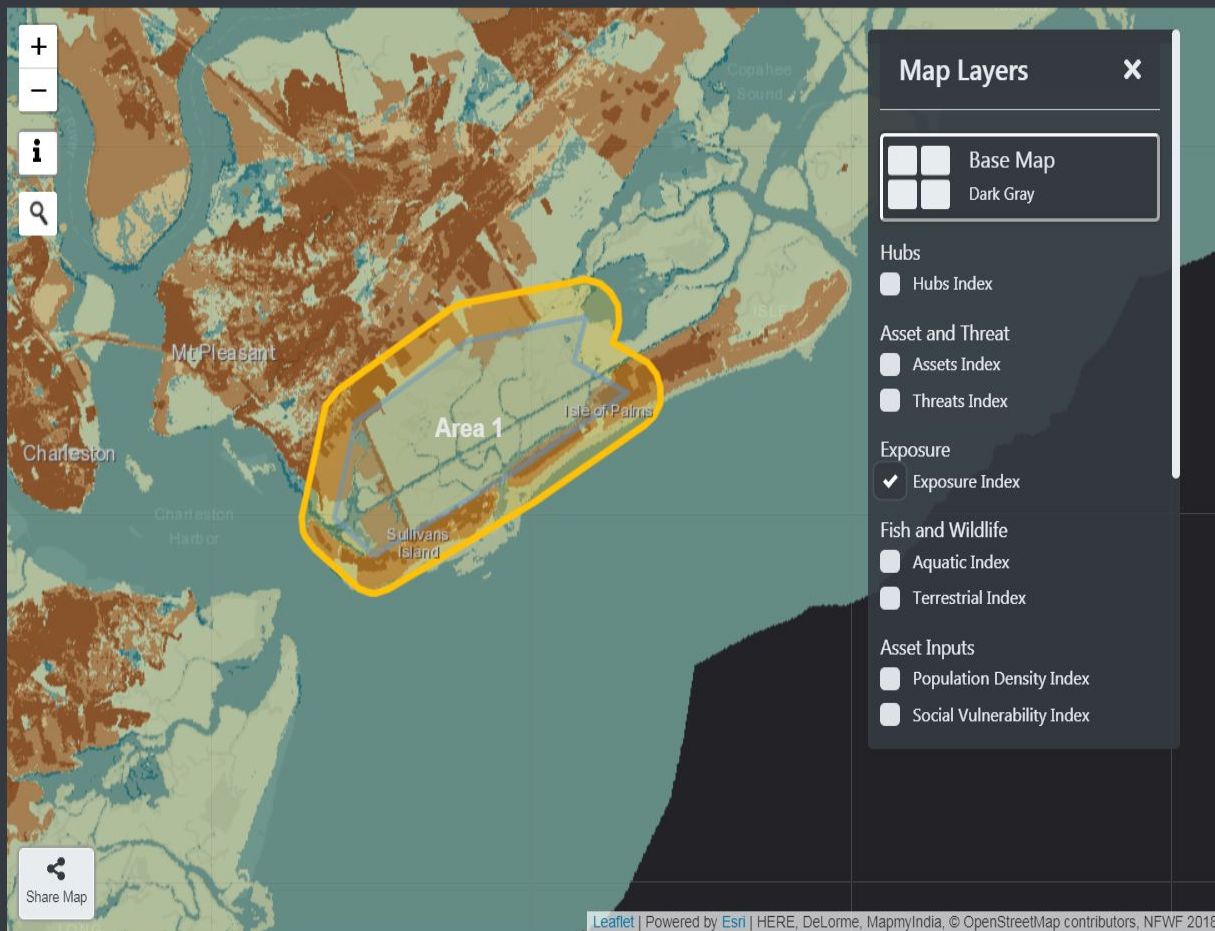
Click on the map to bring up information. Select multiple points to draw an area and get information on the area.

# NFWF Coastal Resilience Assessment


Home


Download Data

## About



## Start Exploring

 Clear Areas  
on map

 Draw Area  
on map

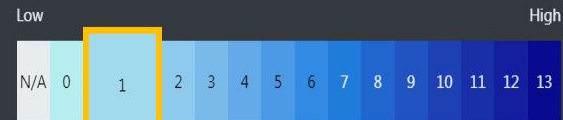
 Upload  
Shapefile

Update  
Statistics



## Asset and Threat Indexes

## Asset Ranking



## Threat Ranking



# Next Steps

- Phase 2 - expanding the Assessment to include Puerto Rico and the U.S. Virgin Islands, Hawaii, Alaska
- Scoring and ranking proposed projects
- Develop process/tool for evaluating metrics of success of projects

# Questions?

---



**NEMAC**  
NATIONAL ENVIRONMENTAL  
MODELING & ANALYSIS CENTER

Greg Dobson, Director of Geospatial Technology  
[gdobson@unca.edu](mailto:gdobson@unca.edu)